

RİZE MTB CUP

09 - 10 AUGUST XCO - C 1

GÜNEYSU / RİZE



RACE GUIDE



**Emin
MÜFTÜOĞLU**

*President of Turkish Cycling
Federation*

WELCOME TO RİZE, Distinguished sports enthusiast,

Türkiye has become a sports country hosting more and more national and international sports events recently.

I can proudly say that the value of Turkish sports has been increasing day by day, thanks to our projects targeting sports and people, as well as our unprecedented experience in organizing such events.

I wish success to all riders who will participate, Thank You.

Index	2
About the Event	3
Daily Schedule	5
Map Stage	6
Regulation	7
Prices	9
Medical Info	10

10 AUGUST 2025

ORGANISERS



HONOUR COMMITTEE

EMİN MÜFTÜOĞLU

PRESENTED

YUSUF ALPEREN AYAR

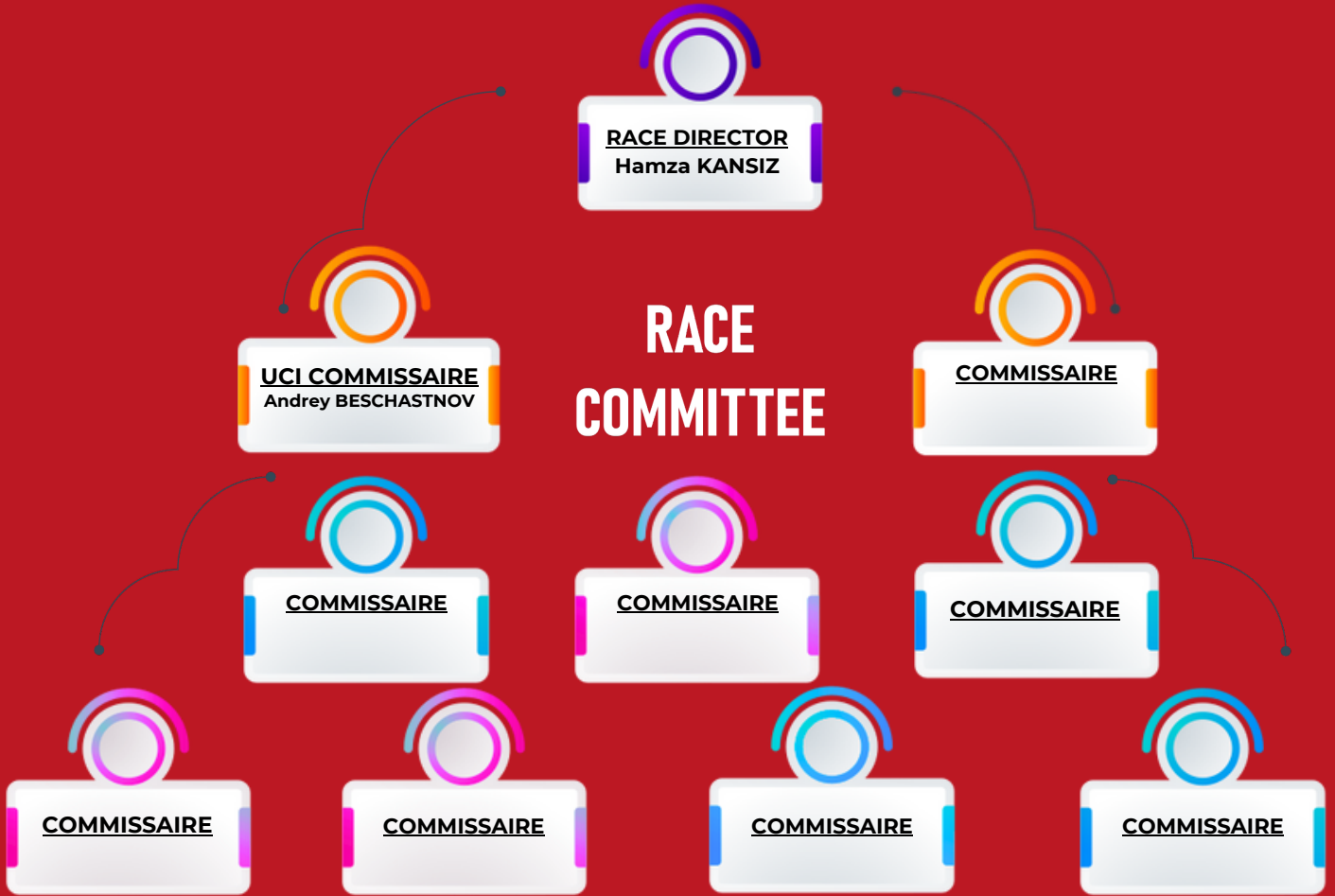
VICE PRESIDENT

MEHMET SEDAT FIRAT

SECRETARY GENERAL

MUSTAFA KOCAMAN

CHAIRMAN OF THE MOUNTAIN BIKE
AND BMX TECHNICAL COMMITTEE



ORGANIZATION COMMITTEE

UCI COURSE DIRECTOR

Seda KARCI

+90 5416840615

LIVE BROADCAST AND MEDIA OFFICER

Ensar EFENDİOĞLU

+90 530 958 07 07

About The Event

Rize MTB Cup is a sports organization that aims to promote the natural and cultural heritage of the Rize region in Rize with the participation of domestic and foreign professional cyclists. The Rize Mountain Bike Cup XCO C1 race is organized under the rules of the UCI, and specific regulations are outlined in this guide. The race results will be published on www.bisiklet.org.tr as soon as possible after the confirmation of the PCP.

Venue

RİZE MTB Cup Race Class 1 (XCO) 10 August 2025



Title and Race Office

GSB GÜNEYSU GENÇLİK MERKEZİ



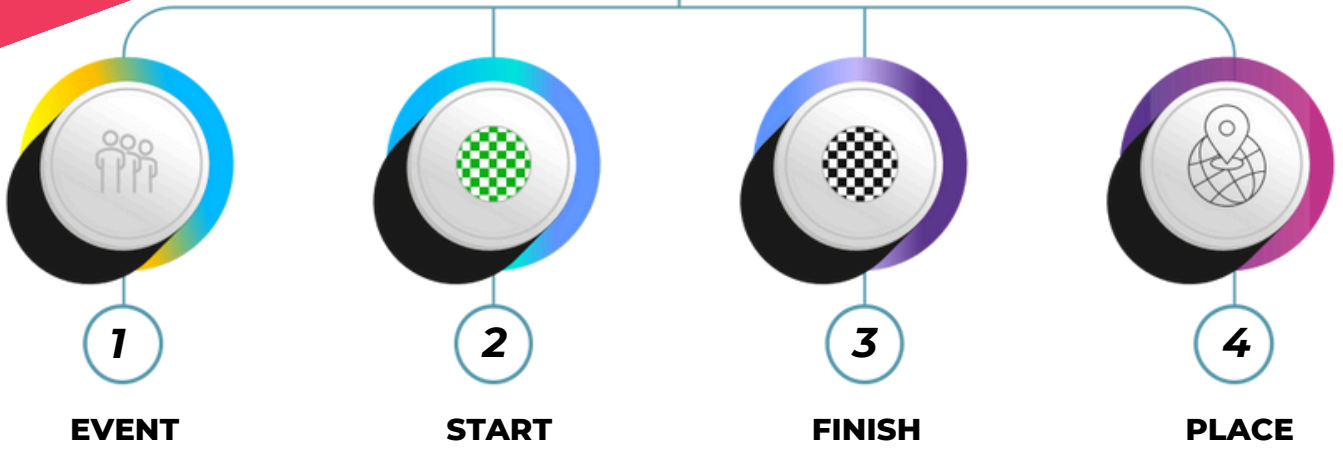
Accommodation

Flora Handüzü Resort & Bungalow



İFO: +90 534 500 25 28

DAILY SCHEDULE



9 AUGUST 2025

Official Training(XCO)	10:00	13:00	FLORA HANDÜZÜ RESORT &BUNGALOW
UCI Registration(XCO)	18.00	13:00	Güneysu Youth Center
UCI Race Meeting(XCO)	13.00	15.00	Güneysu Youth Center

10 AUGUST 2025

Elite Men	13:30	FLORA HANDÜZÜ RESORT &BUNGALOW
U23 Men	13:31	FLORA HANDÜZÜ RESORT &BUNGALOW
Elite Woman	13:32	FLORA HANDÜZÜ RESORT &BUNGALOW
U23 Woman	13:33	FLORA HANDÜZÜ RESORT &BUNGALOW
Junior Men	15:00	FLORA HANDÜZÜ RESORT &BUNGALOW
Junior Woman	15:01	FLORA HANDÜZÜ RESORT &BUNGALOW

All Category Award Ceremony (XCO)

"The award ceremony will be held 30 minutes after the end of each category's competition at FLORA HANDÜZÜ RESORT &BUNGALOW "



LINK: <https://flow.polar.com/shared2/7e97fd140464c156221f27c9320fe366>

REGULATION

This race is organized under UCI regulations. The race office will be open on August 9, 2025, from 12:00 to 16:30 at Güneysu Youth Center.

Each rider must fill out the registration form available on www.bisiklet.org.tr and enter their UCI ID license number.

For Mountain Bike Race registrations, riders must complete the registration form attached to the race announcement and send it digitally via email to tbfmtbkayit@gmail.com by August 7, 2025, at 17:00.

Late registrations will be accepted with a penalty fee until August 8, 2025, at 14:30. The late registration penalty fee of 20 Euros must be deposited into the following account, and the payment receipt must be submitted along with the registration form.

Bank Account Details:

Account Name: TÜRKİYE BİSİKLET FEDERASYONU BAŞKANLIĞI

IBAN (EURO): TR040003200000000136096572

SWIFT Code: TEBUTRIS682

After August 8, 2025, at 14:30, no further registrations will be accepted under any circumstances. Riders who fail to register within the given period will not be allowed to participate in the race.

The registration period will end on August 7, 2025, or earlier if all 300 available slots are filled.

There is a registration fee for the race. The participation fee for each rider is 60 Euros. Riders must deposit the registration fee into the designated account and bring the receipt to the race registration area. Cash payments will not be accepted at the race venue.

Registration Includes:

- Right to participate in the competition.
- Personalized plate and start number.
- Electronic timing control device.
- Course marking and marshals.
- Liquid and solid feed zones.
- Medical assistance on and off the course.
- Bicycle washing area.
- Guarded bicycle parking.
- Toilets.

Cancellation Policy and Changes (According to Entry Fee):

- **Cancellations requested until August 1, 2025, will have no penalty.**
- **Cancellations requested after August 1, 2025, will incur a 40 Euro penalty.**
- **Cancellations or changes must be requested only through www.bisiklet.org.tr.**
- **Registration transfers will only be valid for the next edition; otherwise, the entry fee will be forfeited.**
- **If the next edition's entry fee increases, the difference must be paid to complete the transfer.**

Restriction of Registration Time:

All registered online riders are obliged to go to the Registration Office at the times and dates listed in the schedule to confirm their registration and have their licenses checked by the commissaires. Riders who do not complete their registration in person at the race office within the designated period will not be allowed to participate in the races.

Registration Terms:

Rize MTB Cup C1 is open to all riders who have a valid UCI license issued by a National Cycling Federation. Each registration is personal. The transfer of registration or transferring a participant's registration to another person is not permitted.

UCI Categories:

- Elit Women,
- Elite Men,
- U23 Men,
- U23 Women,
- Junior Men ,
- Junior Women

PRIZES

* According to Rules of UCI for the category 1.

** UCI categories, including Elit Women, Elite Men ,U23 Men,U23 Women, Junior Men ,Junior Women, will receive prize money as shown in the list below, according to their rankings. The currency of the prize money is Turkish lira.

1 - The rules will be finalized by the organization company and UCI before the race.

2 - Winner of the Race, 2nd place and 3rd place winners must be presented to podium. No bikes of winners will be at podium during ceremonies. For the General Classification the first three riders will be presented at podium. Ceremonies will be held according race schedule. Leader of general classification must wear a jersey given by organizer.

3 - Non Appearance after the third call (by the official announcer) will lead to the exclusion of the prize money. The award ceremonies take place in front of the FLORA HANDÜZÜ RESORT &BUNGALOW.

4 - The first three placed riders of the race will attend the official awards ceremony.

1 Me - We 420 €	2 Me - We 350 €	3 Me - We 280 €	4 Me - We 210 €	5 Me - We 175 €	6 Me - We 140 €	7 Me - We 105 €	8 Me - We 88 €	9 Me - We 70 €	10 Me - We 35 €	Total Me - We 1873 €
1 Me - We 186 €	2 Me - We 140 €	3 Me - We 91 €	4 Me - We 70 €	5 Me - We 46 €	6 Me - We 35 €	7 Me - We 21 €	8 Me - We 21 €	9 Me - We 21 €	10 Me - We 21 €	Total U23 Me - We 652 €
1 MJ 186 €	2 MJ 140 €	3 MJ 91 €	4 MJ 70 €	5 MJ 46 €	6 MJ 35 €	7 MJ 21 €	8 MJ 21 €	9 MJ 21 €	10 MJ 21 €	Total MJ 652 €

Points For We - Me	01	02	03	04	05	06	07	08	09	10	11	12	13	14	15	16	Rank M - W
	60	40	30	25	20	18	16	14	12	10	8	6	4	2	1	X	

Points For We - Me U23	01	02	03	04	05	06	07	08	09	10	11	12	13	14	15	16	Rank M - W
	15	10	5	3	1	X	X	X	X	X	X	X	X	X	X	X	

Points For MJ	01	02	03	04	05	06	07	08	09	10	11	12	13	14	15	16	Rank M - W
	20	18	16	14	12	10	8	6	4	2	X	X	X	X	X	X	

MEDICAL INFO

Emergency health care services and hospital transfers will be charged. In state hospital patients pay the bills before leaving the hospital. They have the right to collect back the amount they paid by presenting the invoice to their insurance company. In private hospitals, payment may be asked depending on the patient's insurance policies. For foreigners who don't speak Turkish, a call line on number 112 provides interpretive and advisory services 7/24 in English, German, Arabic, Russian, Persian and French.

ON-SITE MEDICAL SERVICES

- At least 3 paramedics with stretchers
- One Doctor
- One Ambulance (Ambulances will provide medical service with three first aid personnel)

ANTI-DOPING CONTROLS

The UCI anti-doping regulations are entirely applicable to the event. Anti-doping tests will take place at a dedicated location after each race as indicated in the race details of this guide.

NEAREST HOSPITALS;

Rize State Hospital

Address: Eminettin, Atatürk Street, 53020 Rize Merkez/Rize, Turkey

Recep Tayyip Erdoğan University Rize Training and Research Hospital

Address: İslampaşa, Şehitler Street No:74, 53020 Rize Merkez/Rize, Turkey

Kaçkar State Hospital – Rize

Address: Hamidiye Mücavir, Kaçkar Street No:27, 53340 Hamidiye/Pazar/Rize, Turkey

Sponsors

SEE YOU AT THE RACES!



Beştepe Neighborhood, Söğütözü, Nergiz Street, Via Tower Business Center, No:7A/15 Yenimahalle/ANKARA

www.bisiklet.org.tr