

ERZURUM MTB CUP RACE SERIES

22 Jun 2022

KİREMITLİKTEPE MTB CUP

WOMEN ELITE - CROSS - COUNTRY SHORT CIRCUIT - CLASS 3
MEN ELITE - CROSS-COUNTRY SHORT CIRCUIT - CLASS 3

23 Jun 2022

PALANDÖKEN MTB CUP

MEN ELITE - CROSS-COUNTRY OLYMPIC - CLASS 2
MEN JUNIOR - CROSS-COUNTRY OLYMPIC - CLASS 2
WOMEN JUNIOR - CROSS-COUNTRY OLYMPIC - CLASS 2
WOMEN ELITE - CROSS-COUNTRY OLYMPIC - CLASS 2



T.C.
ERZURUM
VALİLİĞİ



ERZURUM MTB CUP RACE SERIES

ORGANIZERS



Okay MEMİŞ

Governor of Erzurum

WELCOME TO ERZURUM

Distinguished sports enthusiast,

Turkey has become a sports country hosting more and more national and international sports events recently.

I can proudly say that the value of Turkish sports has been increasing day by day, thanks to our projects targeting sports and sport and people and our unprecedented experience in organizing such events.

I wish success to all riders who will participate, Thank You.



Mehmet SEKMEN

Mayor of Erzurum

Metropolitan Municipality

WELCOME TO ERZURUM

Distinguished sports enthusiast,

Turkey has become a sports country hosting more and more national and international sports events recently.

I can proudly say that the value of Turkish sports has been increasing day by day, thanks to our projects targeting sports and sport and people and our unprecedented experience in organizing such events.

I wish success to all riders who will participate, Thank You.



Emin MÜFTÜOĞLU

President of Turkish

Cycling Federation

WELCOME TO ERZURUM

Distinguished sports enthusiast,

Turkey has become a sports country hosting more and more national and international sports events recently.

I can proudly say that the value of Turkish sports has been increasing day by day, thanks to our projects targeting sports and sport and people and our unprecedented experience in organizing such events.

I wish success to all riders who will participate, Thank You.

ERZURUM MTB CUP RACE SERIES

ORGANİZERS



Contents

Index	2
Daily Schedule	3
About Race	4
Stage - Map	5
Regulation	6
Regulation	7
Daily Schedule	3
About Race	4
Stage - Map	5
Regulation	6
Regulation	7

ERZURUM MTB CUP RACE SERIES

DAILY SCHEDULE

	1 EVENT	2 START	3 FINISH	4 PLACE
21 JUNE 2022	COMMISSAIRE MEETING	14:00 at	15:00 at	SNOWDORA OTEL
	LICENCE CHECK	15:00 at	17:30 at	SNOWDORA OTEL
	TECHNICAL MEETING	17:30 at	18:00 at	SNOWDORA OTEL
22 JUNE 2022	ERZURUM ME	10:00 at	11:00 at	KİREMİTLİKTEPE SHORT CIRCUIT
	ERZURUM WE	10:01 at	11:00 at	KİREMİTLİKTEPE SHORT CIRCUIT
23 JUNE 2022	ERZURUM ME	12:30 at	14:30 at	PALANDOKEN CROSS COUNTRY
	ERZURUM WE	12:31 at	14:30 at	PALANDOKEN CROSS COUNTRY
	ERZURUM WJ	12:32 at	14:30 at	PALANDOKEN CROSS COUNTRY
	ERZURUM MJ	12:33 at	14:30 at	PALANDOKEN CROSS COUNTRY

ERZURUM MTB CUP RACE SERIES

About The Event

Erzurum Mountain Bike Cup is a sport organization that targets the natural and cultural promotion of the province of Palandöken, Erzurum district, with the participation of domestic and foreign professional riders. The race Erzurum Mountainbike Cup Race XCO C2 is organized under the rules of the UCI, and the specific rules are mentioned in this guide. The result of race will be published on the web site www.ejder3200.com as soon as possible after the confirmation of PCB.

Venue

UCI ERZURUM Mountainbike Cup Race 22-23 June 2022

Title and Race Office

Yunus Emre Mah. Küme Evler Sok. Kayak Merkezleri Cad. Snowdora Otel Palandöken/ERZURUM



RACE DIRECTOR

**Mustafa
KOCAMAN**



UCI COMMISSAIRE

**Nikola
JAKOVLJEVIĆ**



COMMISSAIRE

**Merve
KILIÇ**



COMMISSAIRE

**Burak
TEK**



COMMISSAIRE

**Batuhan
YALÇINKAYA**



COMMISSAIRE

**Pervin
HAMKAN**



COMMISSAIRE

**Mesut
SOLAKLAR**

ORGANIZATION COMMITTEE

COURSE DIRECTOR

Yasin KAYLI
+90 539 590 65 90

START - FINISH DIRECTOR

İsmail ÇOLAK
+90 533 619 18 25

FEDERATION

Ebru AYTAŞ
+90 530 527 99 53

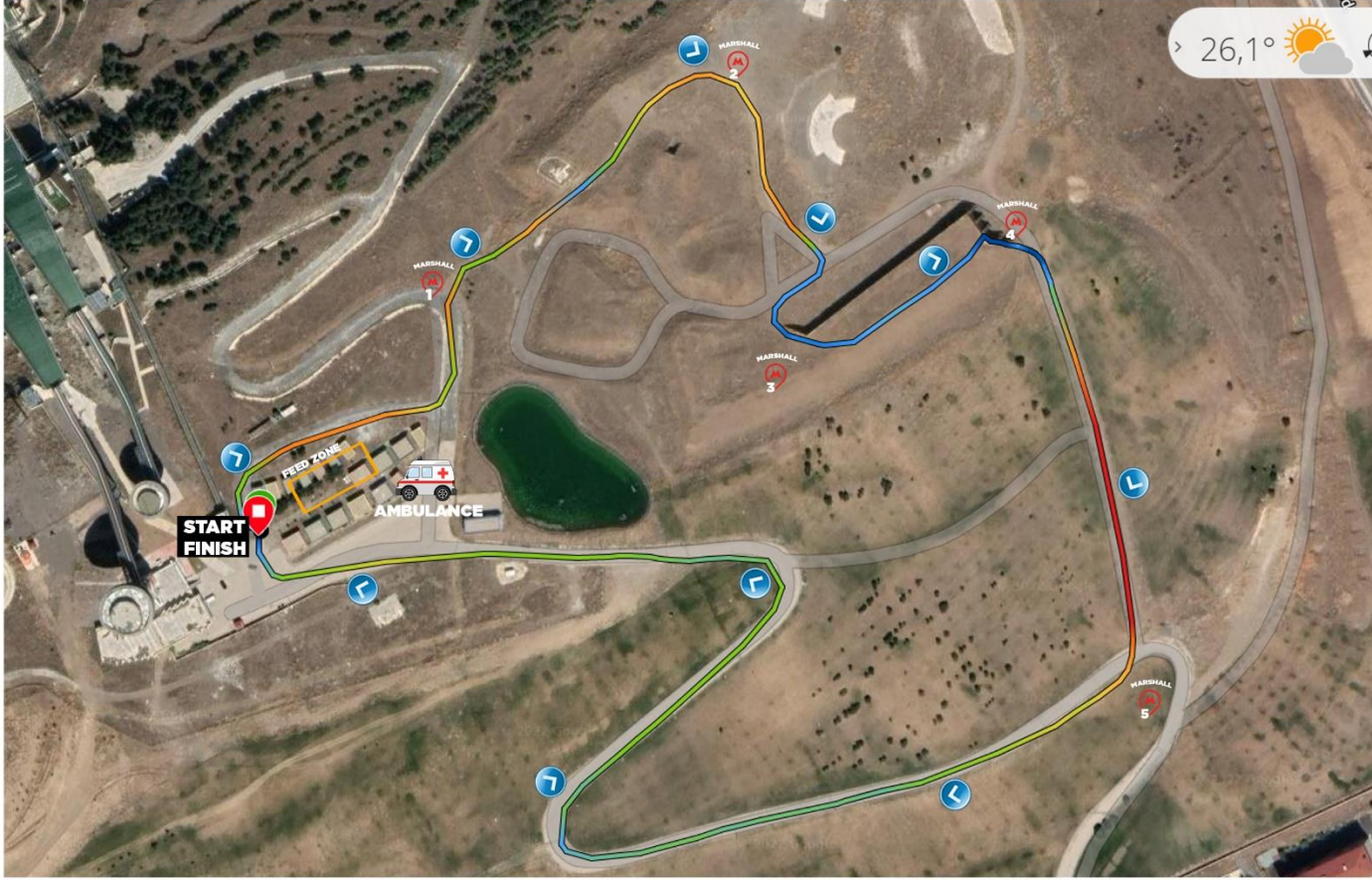
ACCOUNTING

Murat ÇELEBİ
+90 554 985 58 21

INT. RELATIONS

Melih TOPUZ
+90 555 651 30 25

ERZURUM MTB CUP RACE SERIES



Yükseklik

2,050.0
2,000.0
1,950.0
1,900.0

0:25 0:50 1:15 1:40 2:05 2:30 2:55 3:20 3:45 4:10 4:35 5:00

10:00 at **START TIME**

1,51 km **COURSE LONG**

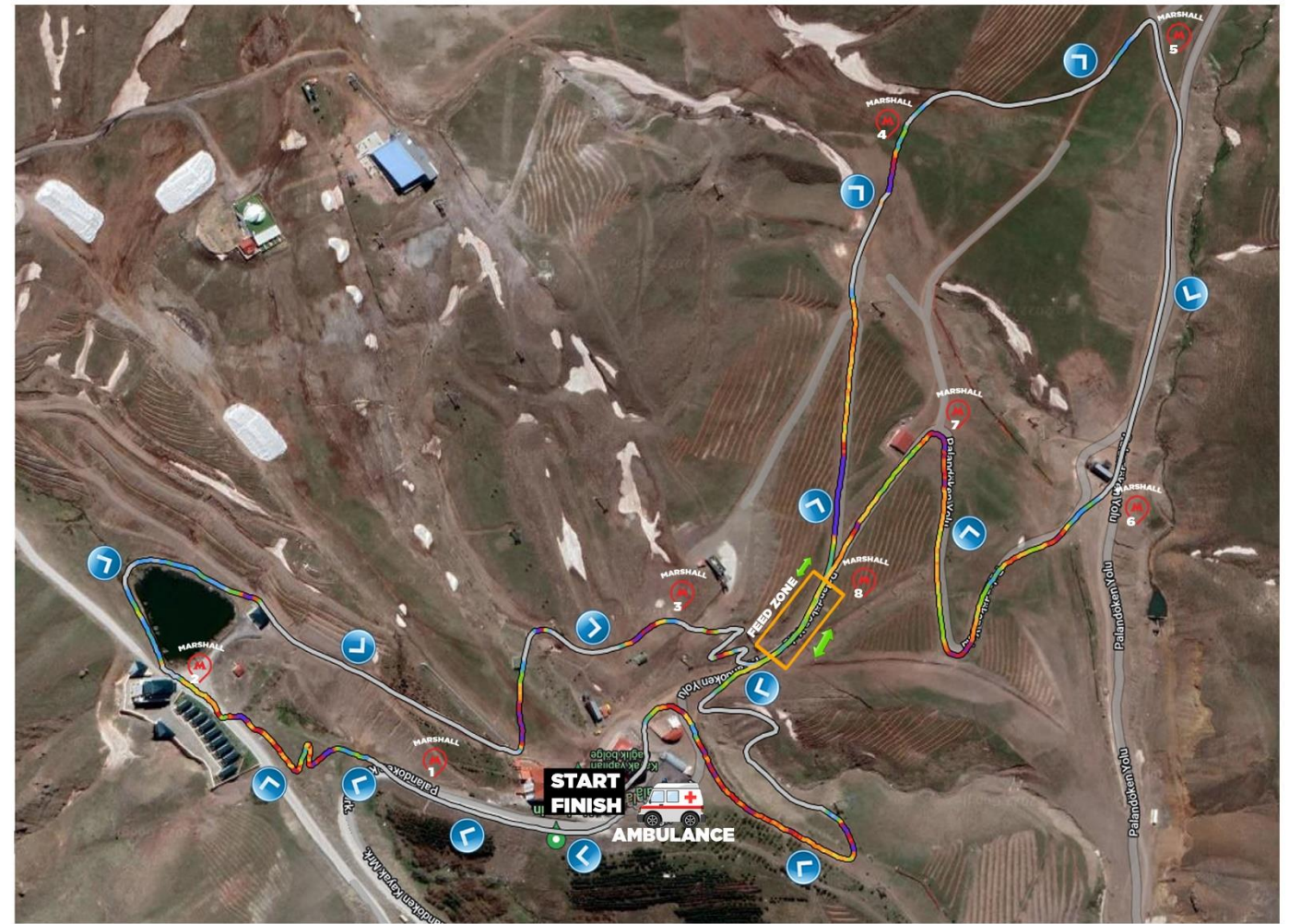
27 MT **TOTAL ELEVATION**

12:00 at **FINISH TIME**

KİREMITLİKTEPE SHORT CIRCUIT

PALANDOKEN- KİREMITLİKTEPE

ERZURUM MTB CUP RACE SERIES



12:30 at	START TIME	4,08 km	COURSE LONG	157 MT	TOTAL ELEVATION	14:00 at	FINISH TIME
----------	------------	---------	-------------	--------	-----------------	----------	-------------

PALANDÖKEN CROSS COUNTY OLYMPC

PALANDOKEN- KIREMITLIKTEPE

ERZURUM MTB CUP RACE SERIES

REGULATION

This race organized under the UCI regulations and regulations of Turkish Cycling Federation. Race office will be open 21st of June 2022, from 15:00 to 17:30 at Snowdora Otel, each athlete must fill the registration form on www.ejder3200.com web page and enter the UCI ID licence number. Online registrations end on 20.06.2022 at 23:59. The registration period ends on June 21st 2022 or until the 1000 slots available are completed. Kiremitliktepe mtb cup short track circuit registration fee 40 euro, Palandöken mtb cup cross country olympic registration fee 60 euro

Registration includes:

- Right to take part in the competition.
- Personalised plate and start number.
- Stage profile stickers.
- Electronic gift (if achieved)
- Electronic timing control device
- Course marking and marshals
- Sweep and rescue vehicles
- Liquid and solid feed zones
- Medical assistance on and off the course
- Bicycle washing area
- Guarded bicycle parking
- Cloakroom
- Changing rooms, toilets and showers.

Cancellation policy and changes (according to entry fee):

Cancellation requested until June 15th 2022: no penalty

Cancellations requested after June 15th 2022: transfer to the next edition.

Cancellations or changes must be requested to www.bisiklet.gov.tr

Registration transfers will only be valid for one edition; otherwise the entry fee will be lost

If the next editions entry fee increases, it will be compulsory to not the difference in order to transfer the registration.

Registration of Registration Time;

All registered online athletes are obliged to go to the Registration Office at the time and dates listed in the schedule to confirm their registration and have their licenses checked by the commissaires. Riders who do not register in real time in the race office can not participate in the races.

Terms of Registration

- Erzurum Mtb Cup Race Series is open to all riders who have a valid UCI license by a National Cycling Federation.
- Each registration is personal. Transfer of registration or transferring the registration of a participant to another will not be permitted. The time limit will be applied, details will be announced managers meeting.

Kiremitliktepe Mtb Cup Short Track Circuit

UCI Categories

- Elit Women
- Elite Men

Palandöken Mtb Cup Cross Country Olympic

UCI Categories

- Elit Women
- Elite Men
- Junior Men
- Junior Women

Terms of Registration

The following steps are reasons for disqualification from the race.

- Failure to comply with UCI's rules of ethics and to display an attitude contrary to the riders
- Not passing through any control point of the race track
- Using shortcuts or motor vehicles
- Not to have equipment specified in the specified rules.
- Change the plate number or give it to another rider.
- Compete or participate in the competition for another

ERZURUM MTB CUP RACE SERIES

MEDICAL INFO

Emergency health care services and hospital transfers will be charged. In state hospital patients pay the bills before leaving the hospital. They have the right to collect back the amount they paid by presenting the invoice to their insurance company. In private hospitals, payment may be asked depending on the patient's insurance policies. For foreigners who don't speak Turkish, a call line on number 444 4 728 provides interpretive and advisory 7/24 in English, German, Arabic, Russian, Persian and French.

Inside Medical Services

- A. Two paramedic with sleight stretchers
- B. One Doctor
- C. One Ambulance (Ambulances will provide medical service with three first aid personnels)

Anti - Doping Controls

The UCI anti-doping regulations are entirely Applicable to the event. Anti-doping tests will take place at a dedicated location after each race.

Nearest Hospitals;

Erzurum City Hospital

Hüseyin avni ulaş mah. no:149 Palandöken/ERZURUM

Erzurum Buhara Hospital

Yunus Emre Mah. No:6 Palandöken ERZURUM

PRIZES

Prizes for each UCI Category shall be according UCI Financial obligations(Group 2 - Currency EURO)

UCI categories, Elite Men and Elite Women will receive prize money shown in up list according to their rankings. The currency or prize money is Euro

1- The rules will be finalized by the organization company and UCI before the race.

2- Winner of the Race, 2nd place and 3rd place winners must be presented to podium. No bikes of winners will be at podium during ceremonies. For the General Classification the first three riders will be presented at podium. Ceremonies will be according race schedule. Leader of general classification must of the Snowdora Otel

3- Non Appearance after the third call (by the official announcer) will lead to the exclusion of the money. The award ceremonies take place in front of the Snowdora Otel

4- The first three placed riders of the race attend the official awards ceremony.

KIREMITLIKTEPE MTB CUP SHORT TRACK CIRCUIT PRIZE LIST

01	02	03	04	05	06	07	08	09	10	TOTAL
ME - WE	ME - WE	ME - WE	ME - WE	ME - WE	ME - WE	ME - WE	ME - WE	ME - WE	ME - WE	ME - WE
140 €	105 €	70 €	52,5 €	35 €	-	-	-	-	-	402,5 €

POINTS FOR WE - ME	01	02	03	04	05	06	07	08	09	10	11	12	13	14	15	16	RANK W-M
	10	6	4	2	1	x	x	x	x	x	x	x	x	x	x	x	

PALANDÖKEN MTB CUP CROSS COUNTRY OLYMPC PRIZE LIST

01	02	03	04	05	06	07	08	09	10	TOTAL
ME - WE	ME - WE	ME - WE	ME - WE	ME - WE	ME - WE	ME - WE	ME - WE	ME - WE	ME - WE	ME - WE
175 €	140 €	105 €	87,5 €	70 €	63 €	56 €	49 €	42 €	35 €	822,5 €
01	02	03	04	05	06	07	08	09	10	TOTAL
MJ	MJ	MJ	MJ	MJ	MJ	MJ	MJ	MJ	MJ	MJ
56 €	45,5 €	35 €	21 €	17,5 €	-	-	-	-	-	175 €

POINTS FOR WE - ME	01	02	03	04	05	06	07	08	09	10	11	12	13	14	15	16	RANK W-M
	30	20	15	12	10	8	6	4	2	1	x	x	x	x	x	x	
POINTS FOR MJ-WJ	01	02	03	04	05	06	07	08	09	10	11	12	13	14	15	16	RANK
	20	18	16	14	12	10	8	6	4	2	x	x	x	x	x	x	



Beştepe Mah. Söğütözü, Nergiz Sok.
Via Tower İş Merkezi No:7a/15
Yenimahalle/ ANKARA

www.bisiklet.gov.tr



Yunus Emre Mah. Küme Evler Sok.
Kayak Merkezleri Cad. Snowdora Otel

www.ejder3200.com

